

# APC International, Ltd.

TEL: +570-726-6961 FAX +570-726-7466

E-mail: [sales@americanpiezo.com](mailto:sales@americanpiezo.com)

Photo:



Standard type of this sensor:

25T-16AW	Catalog # 10-1011
25R-16AW	Catalog # 10-1016
25T-16P	Catalog # 10-1021
25R-16P	Catalog # 10-1026

Specification

PARTS NUNBER	25T-16	25R-16
Center frequency (kHz)	25.0±1.0kHz	25.0±1.0kHz
Sound pressure level (0dB=0.0002 μ bar) *	≥ 112dB	-----
Sensitivity (0dB vs 1V/ μ bar) *	-----	≥ -65dB
Bandwidth (kHz)	4.0/106dB	3.5/-71dB
Beam angle -6dB	70°	
Driving voltage (RMS) *	20V	
Working temperature (°C)	-30~80	

\*Sound Pressure Level: 1 dB vs 0.0002 ubar measured at 10Vrms, 30 cm distance

\*Sensitivity: 0dB vs 1V/ubar, 30 cm distance

\*Maximum Drive Voltage: 30 Vrms or 90 V(peak - peak)

Dimension(25T/R-16P):

A=16.1±0.3

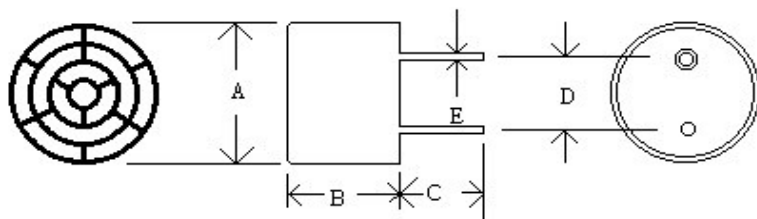
B=12.0±0.4

C= 9.5±1.0

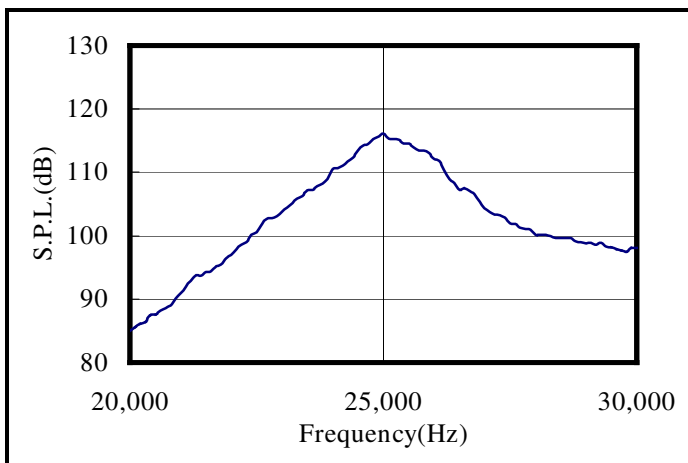
D=10.0±0.5

E=1.0±0.1

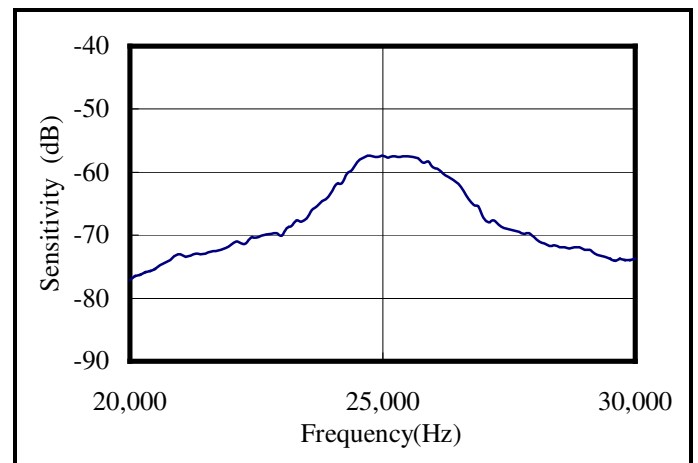
(UNIT: mm)



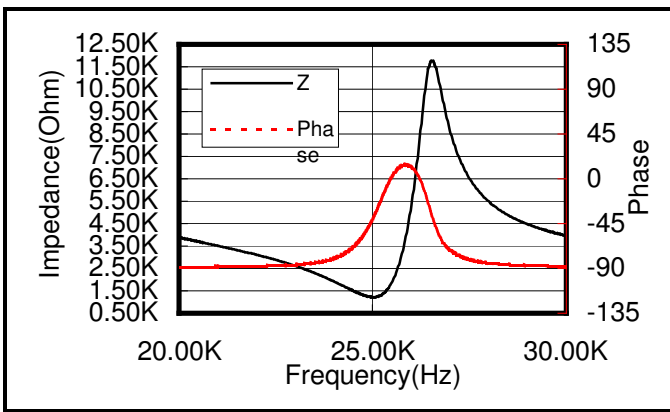
Transmitter impedance



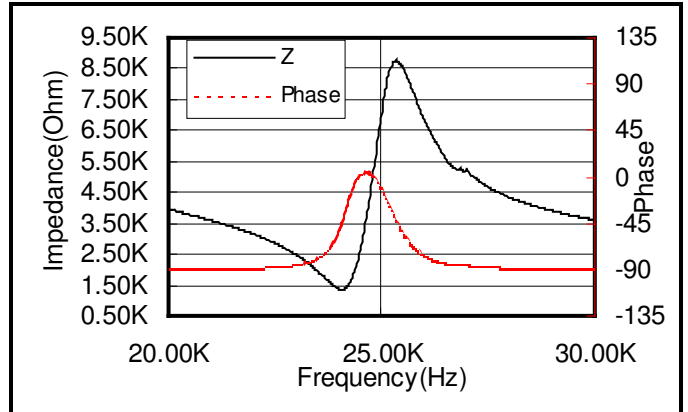
Receiver impedance



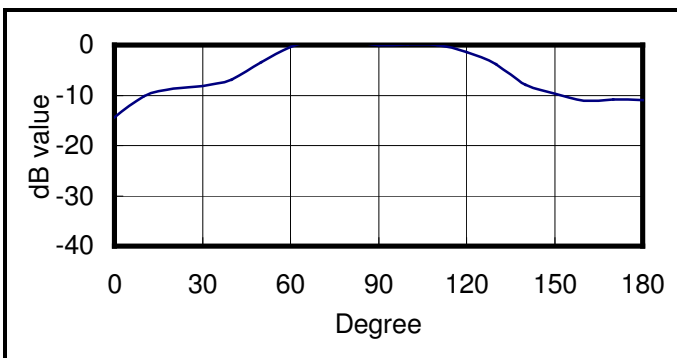
Transmitter impedance



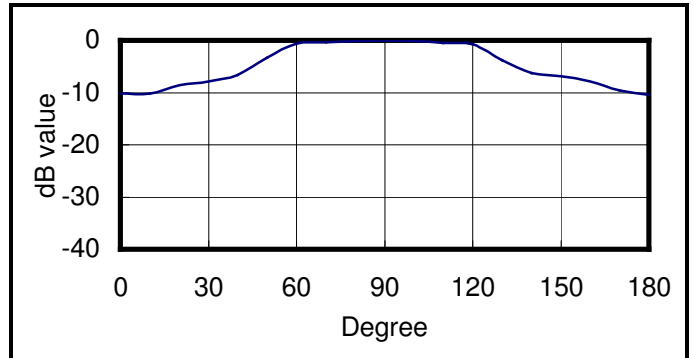
Receiver impedance



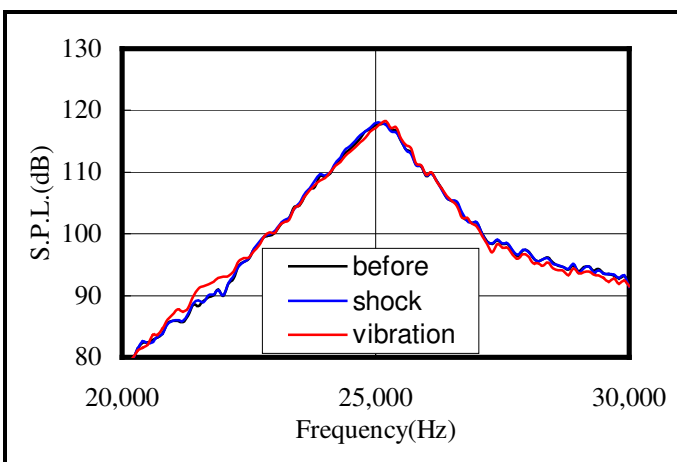
Beam angle of transmitter



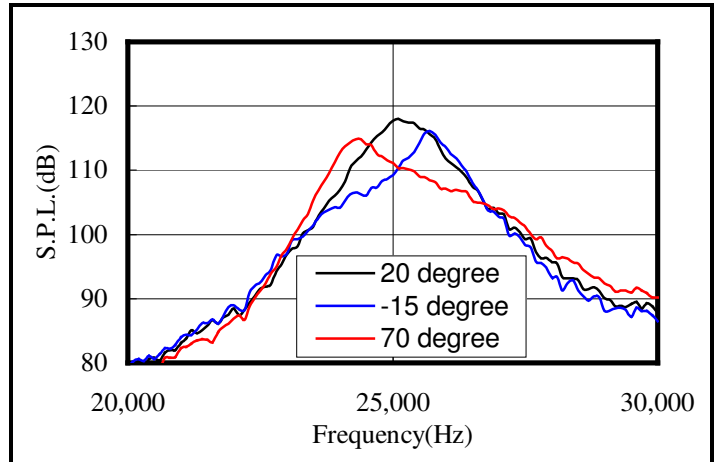
Beam angle of receiver



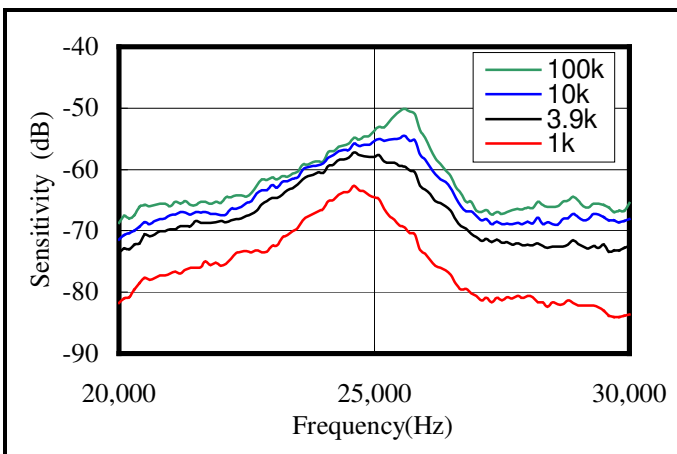
Environment test



Temperature test



Sensitivity change with load resistance



S.P.L. change with driving voltage

