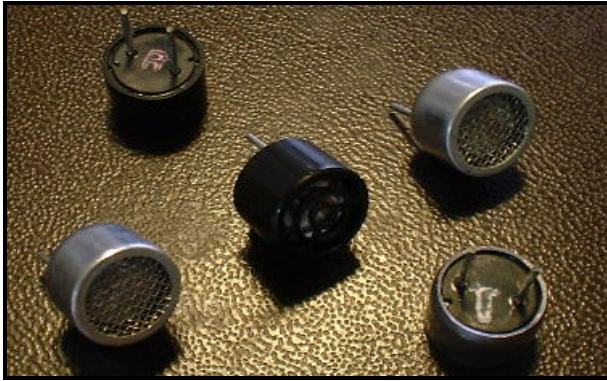


APC International, Ltd.

TEL: +570-726-6961 FAX +570-726-7466 E-mail: sales@americanpiezo.com

Photo:



Standard type of this sensor:

| | |
|----------|-------------------|
| 40T-10AW | Catalog # 10-1036 |
| 40R-10AW | Catalog # 10-1041 |
| | |

Specification:

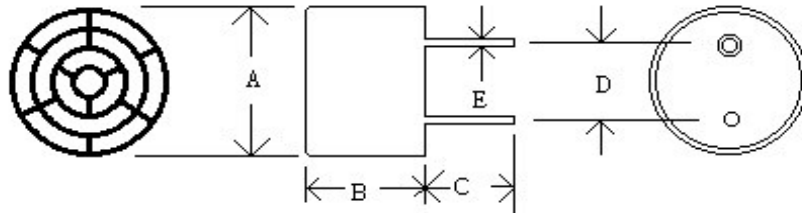
| PARTS NUMBER | 40T-10 | 40R-10 |
|---|-------------|-------------|
| Center frequency (kHz) | 40.0±1.0kHz | 40.0±1.0kHz |
| Sound pressure level (0dB=0.0002 μ bar) * | ≥ 112dB | ----- |
| Sensitivity (0dB vs 1V/ μ bar) * | ----- | ≥ -69dB |
| Bandwidth (kHz) | 4.0/105dB | 2.0/-73dB |
| Beam angle -6dB | 80° | |
| Driving voltage (RMS) | 20V | |
| Working temperature (°C) | -30~80 | |

*Sound Pressure Level: 1 dB vs 0.0002 ubar measured at 10Vrms, 30 cm distance

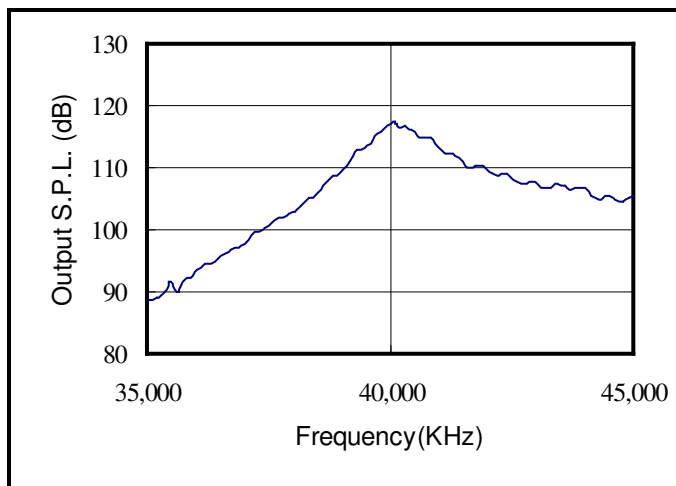
*Sensitivity: 0dB vs 1V/ubar, 30 cm distance

Dimension(40T/R-10P):

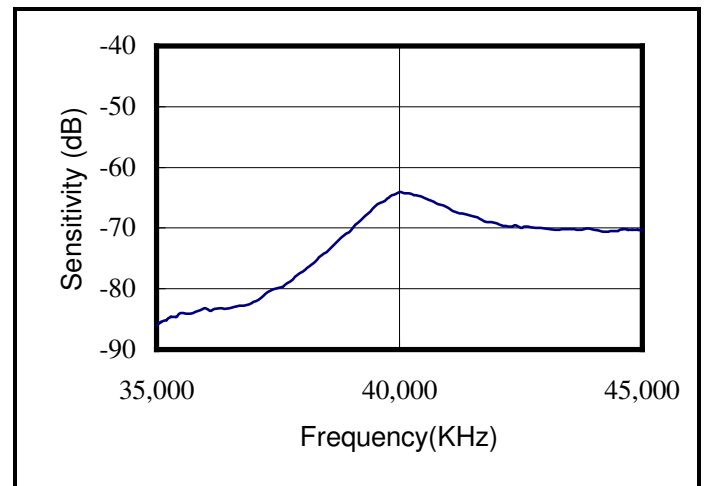
- A=9.8±0.2
- B=6.8±0.4
- C=6.9±0.8
- D=5.0±0.2
- E=0.7±0.1
- (UNIT: mm)



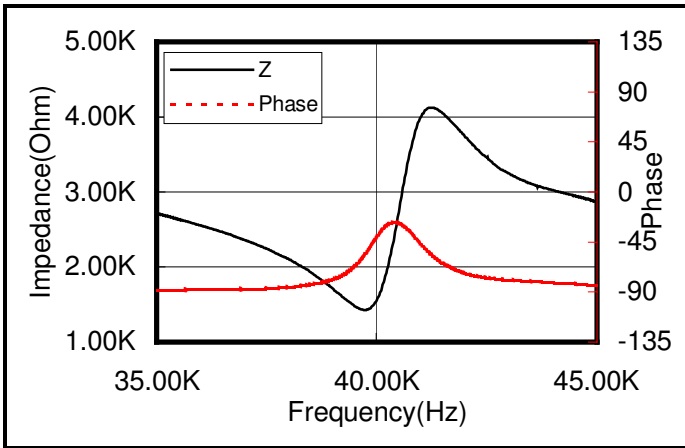
Sound pressure level



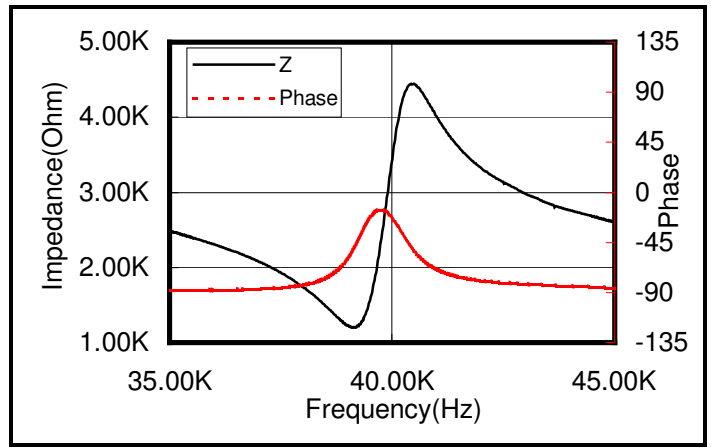
Sensitivity



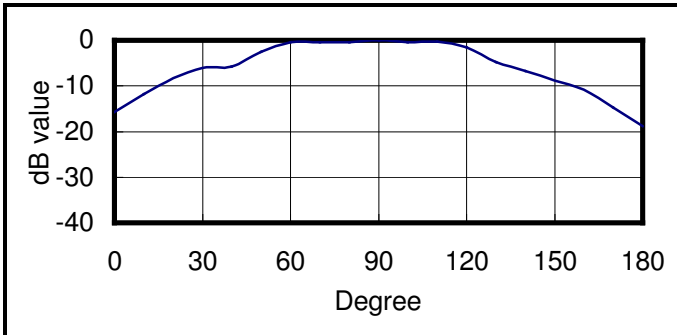
Transmitter impedance



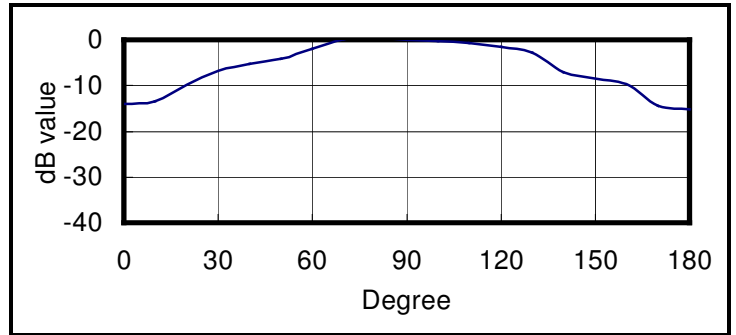
Receiver impedance



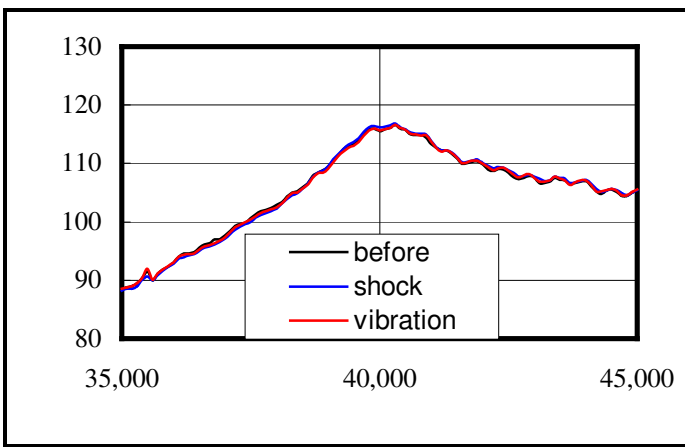
Beam angle of transmitter



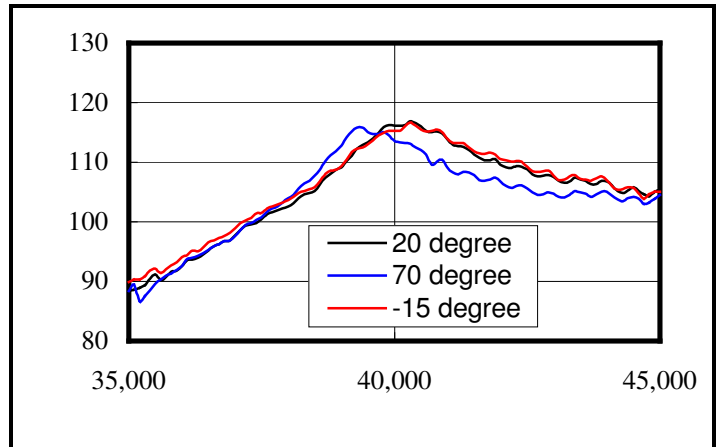
Beam angle of receiver



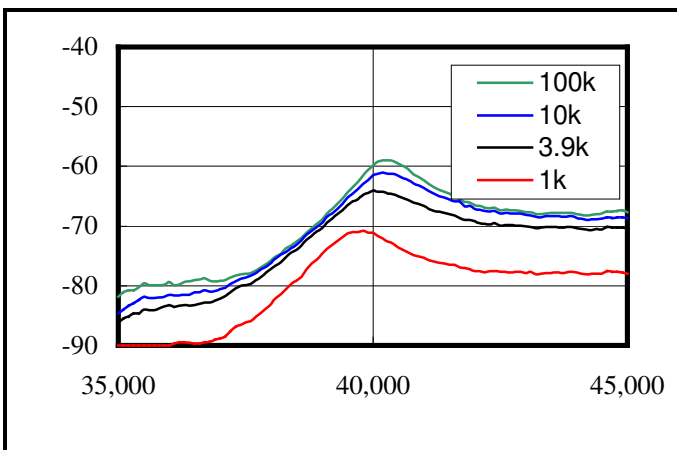
Environment test



Temperature test



Sensitivity change with load impedance



S.P.L. change with driving voltage

