

# APC International, Ltd.

TEL: +570-726-6961 FAX +570-726-7466 E-mail: sales@americanpiezo.com

Photo:



Standard type of this sensor:

40T-12AW	Catalog # 10-1061
40R-12AW	Catalog # 10-1066

Specification:

PARTS NUMBER	40T-12	40R-12
Center frequency (kHz)	40.0±1.0kHz	40.0±1.0kHz
Sound pressure level (0dB=0.0002 μ bar) *	≥ 115dB	-----
Sensitivity (0dB vs 1V/ μ bar) *	-----	≥ -67dB
Bandwidth (kHz)	4.0/105dB	2.0/-73dB
Beam angle -6dB	60°	
Driving voltage (RMS)	20V	
Working temperature(°C)	-30~80	

\*Sound Pressure Level: 1 dB vs 0.0002 ubar measured at 10Vrms, 30 cm distance

\*Sensitivity: 0dB vs 1V/ubar, 30 cm distance

Dimension(40T/R-12B):

A=12.7±0.2

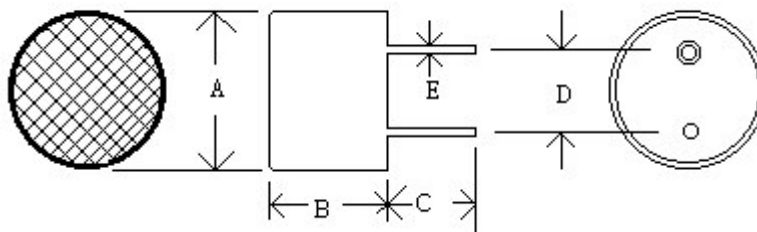
B=9.4±0.4

C=6.2±0.8

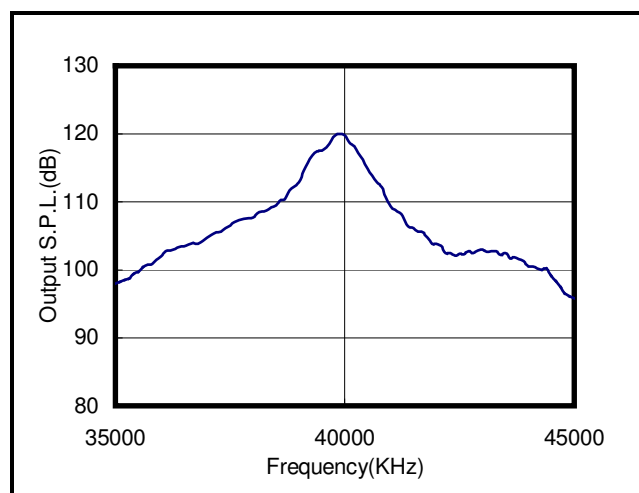
D=8.5±0.2

E=0.7±0.1

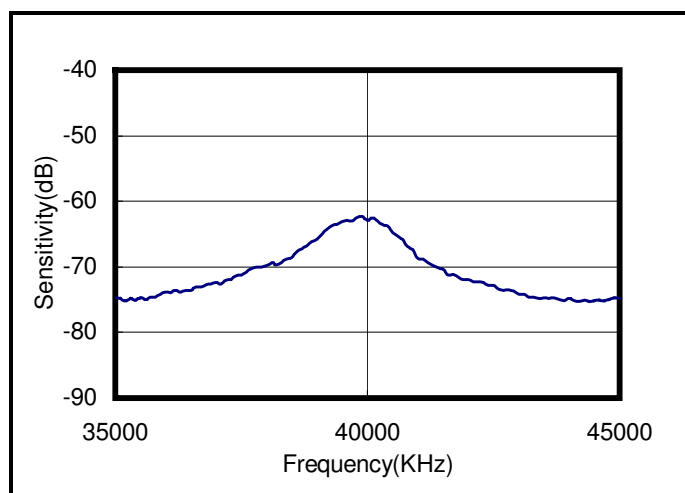
(UNIT: mm)



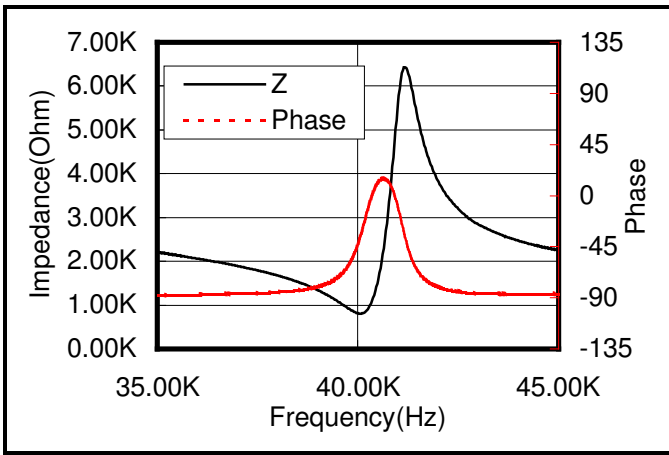
Sound Pressure Level



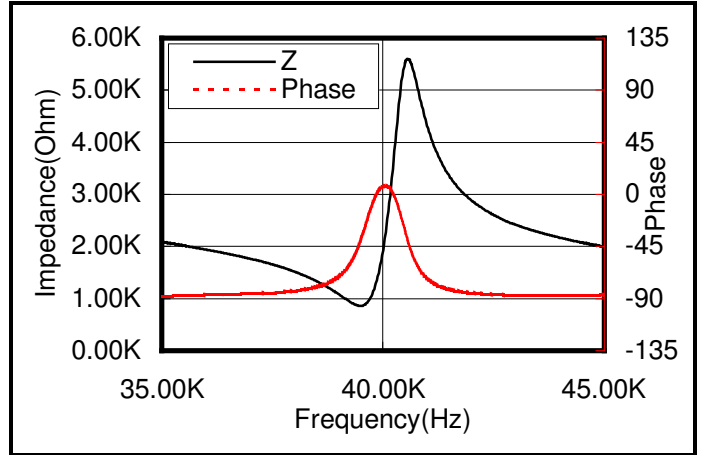
Sensitivity



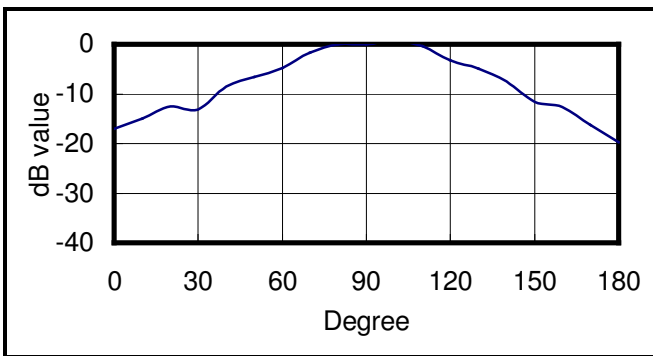
Transmitter impedance



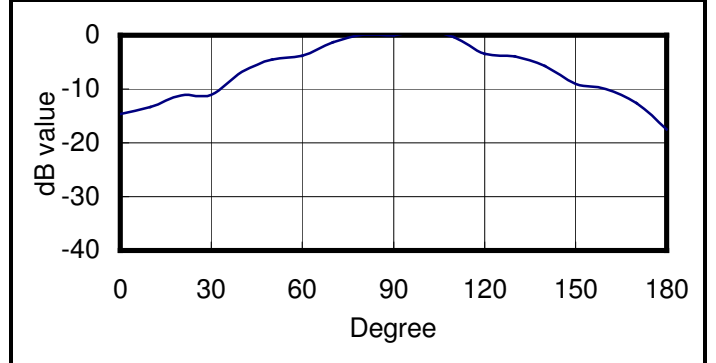
Receiver impedance



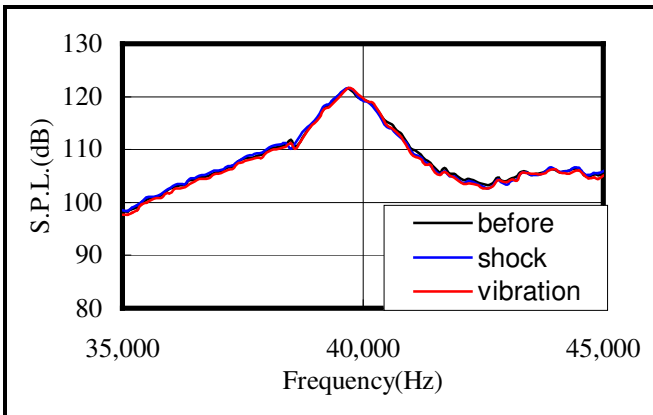
Beam angle of transmitter



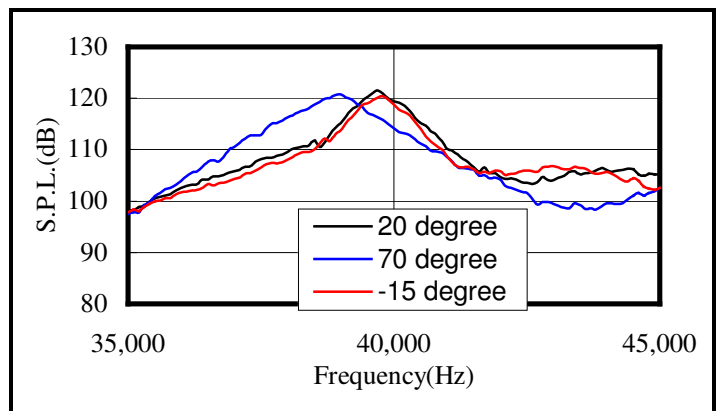
Beam angle of receiver



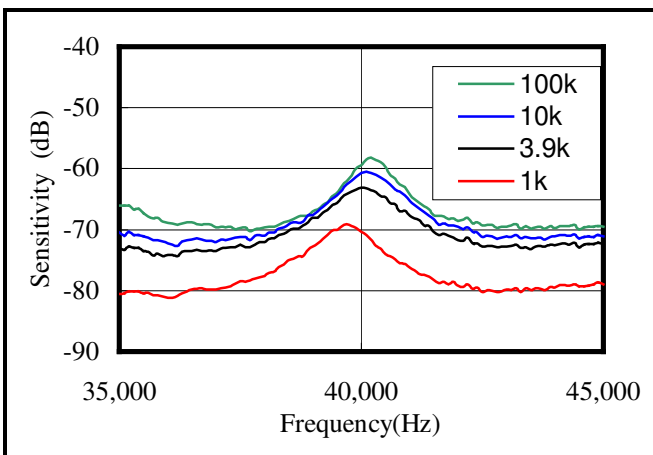
Environment test



Temperature test



Sensitivity change with load resistance



S.P.L. change with driving voltage

